

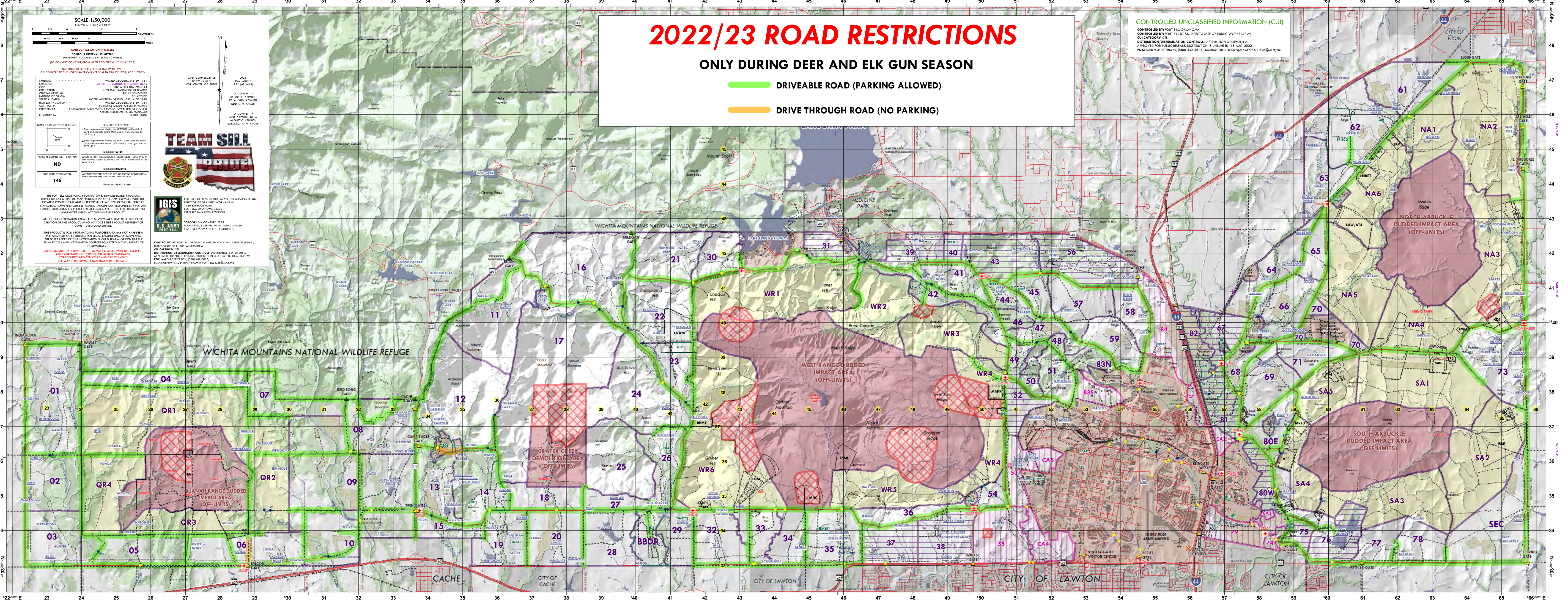
**CATFISH UNDER 10" MUST BE IMMEDIATELY RELEASED.**  
DAILY CHANNEL CATFISH CREEL LIMIT OF 6.

**BASS CAUGHT IN RED SLOT (13"-16") MUST BE IMMEDIATELY RELEASED.**  
DAILY BASS CREEL LIMIT OF 5. (NO MORE THAN 2 OVER 16")

# U.S. ARMY - FIRES CENTER OF EXCELLENCE AND FORT SILL

## NATURAL RESOURCES SPORTSMEN SERVICES RECREATION MAP

**FOR RECREATIONAL USE ONLY**  
NOT INTENDED FOR TRAINING OR TARGETING PURPOSES.



# 2022/23 ROAD RESTRICTIONS

**ONLY DURING DEER AND ELK GUN SEASON**

- DRIVEABLE ROAD (PARKING ALLOWED)
- DRIVE THROUGH ROAD (NO PARKING)

**SCALE 1:50,000**  
1 INCH = 4,166.67 FEET

1 0.5 2 KILOMETERS  
0.5 1 2 MILES

**CONTOUR ELEVATION IN METERS**  
CONTOUR INTERVAL 50 METERS  
SUPPLEMENTAL CONTOUR INTERVAL 10 METERS  
(TO CONVERT CONTOUR FROM METERS TO FEET MULTIPLY BY 3.28)

**NATIONAL GEODETIC VERTICAL DATUM OF 1988**  
(TO CONVERT TO THE NORTH AMERICAN VERTICAL DATUM OF 1929, ADD 1 FOOT)

**SPHEROID** ..... WORLD GEODETIC SYSTEM 1984  
**CRATIC** ..... 2.5 WHITE LATITUDE REDUCED TO THE  
PROJECTION ..... UTM  
**UNIT** ..... METERS  
**CENTRAL MERIDIAN** ..... 99° W  
**LATITUDE OF ORIGIN** ..... 37° 00' 00" N  
**VERTICAL DATUM** ..... NORTH AMERICAN VERTICAL DATUM OF 1988  
**HORIZONTAL DATUM** ..... WORLD GEODETIC SYSTEM 1984  
**CONTROL** ..... NATIONAL GEODETIC SURVEY POINTS  
PREPARED BY ..... INSTALLATION GEOSPATIAL INFORMATION & SERVICES (IG&S)  
PUBLISHED BY ..... UNPUBLISHED

**GRID CONVERGENCE**  
17" (14 METERS)  
FOR CENTER OF SHEET

**2011 G.M. ANGLE**  
3.87 (48 METERS)

**TO CONVERT A MAGNETIC AZIMUTH TO A GRID AZIMUTH**  
ADD G.M. ANGLE

**TO CONVERT A GRID AZIMUTH TO A MAGNETIC AZIMUTH**  
SUBTRACT G.M. ANGLE

**100 METER REFERENCE**  
1. Plotting instrument tolerances plus or minus 0.1 mm and 0.1 mm (0.004 inch and 0.004 inch) are used for the plot and the 100 meter reference is used to determine the point location.  
2. Reading large numbers indicates the HORIZONTAL grid line below point and the vertical number (100 meters) from grid line to point (e.g.).  
Example: 123456

**1000 M. SQUARE IDENTIFICATION**  
When reporting across a 1000 meter line, prefix the 1000 meter square identification in the point location.  
Example: 123456

**GRID ZONE DESIGNATION**  
When reporting across the grid zone designation area, prefix the grid zone designation.  
Example: 148ND123456

**ND**  
145

**TEAM SILL PRIDE**

**IG&S**  
U.S. ARMY  
FORT SILL

THE FORT SILL GEOSPATIAL INFORMATION & SERVICES (IG&S) PROGRAM HEREBY DECLARES THAT THE MAP PRODUCTS PRODUCED ARE PREPARED WITH THE GREATEST POSSIBLE CARE AND IN ACCORDANCE WITH PROFESSIONAL PRACTICE STANDARDS. HOWEVER, FORT SILL CANNOT ACCEPT ANY RESPONSIBILITY FOR ANY ERRORS, OMISSIONS, OR PORTION ACCURACY, AND THEREFORE, THERE ARE NO WARRANTIES WHICH ACCOMPANY THIS PRODUCT.

ALTHOUGH INFORMATION FROM LAND SURVEYS MAY HAVE BEEN USED IN THE CREATION OF THIS PRODUCT, NO WAY DOES THIS PRODUCT REPRESENT OR CONSTITUTE THE INFORMATION.

THIS PRODUCT IS FOR INFORMATIONAL PURPOSES AND MAY NOT HAVE BEEN PREPARED FOR, OR BE SUITABLE FOR, LEGAL ENGINEERING, OR SURVEYING PURPOSES. USE OF THIS INFORMATION SHOULD BE FOR CONSULTATION OF THE PRIMARY DATA AND INFORMATION SOURCES TO ASCERTAIN THE USABILITY OF THE INFORMATION.

ALL GEOSPATIAL DATA DEPICTED IN THIS MAP COMPLIES WITH THE CURRENT ARMY LAND RESTRICTIONS REGULATIONS FOR FACILITIES INFRASTRUCTURE AND ENVIRONMENT. THIS MAP CONFORMS TO NATIONAL MAP STANDARDS.

CONTROLLED BY FORT SILL GEOSPATIAL INFORMATION & SERVICES (IG&S), DIRECTORATE OF PUBLIC WORKS (DPW).  
CUI CATEGORY: C1  
DISTRIBUTION/CLASSIFICATION CONTROLS: DISTRIBUTION STATEMENT A, APPROVED FOR PUBLIC RELEASE. DISTRIBUTION IS UNLIMITED. 18-AUG-2022  
POC: AARON L. PETERSON, (580) 442-3813, USARMY.SILLD-Training@fort-sill-ig&s@army.mil

**CONTROLLED UNCLASSIFIED INFORMATION (CUI)**  
CONTROLLED BY: FORT SILL, OKLAHOMA  
CONTROLLED BY: FORT SILL IG&S, DIRECTORATE OF PUBLIC WORKS (DPW)  
CUI CATEGORY: C1  
DISTRIBUTION/CLASSIFICATION CONTROLS: DISTRIBUTION STATEMENT A, APPROVED FOR PUBLIC RELEASE. DISTRIBUTION IS UNLIMITED. 18-AUG-2022  
POC: AARON L. PETERSON, (580) 442-3813, USARMY.SILLD-Training@fort-sill-ig&s@army.mil